

....HYPOX partner institutions

Partner 4:

IBSS (Sevastopol, Ukraine)



....HYPOX partner institutions: IBSS

Institute of Biology of the Southern Seas

www.ibss.org.ua



....HYPOX partner institutions: IBSS

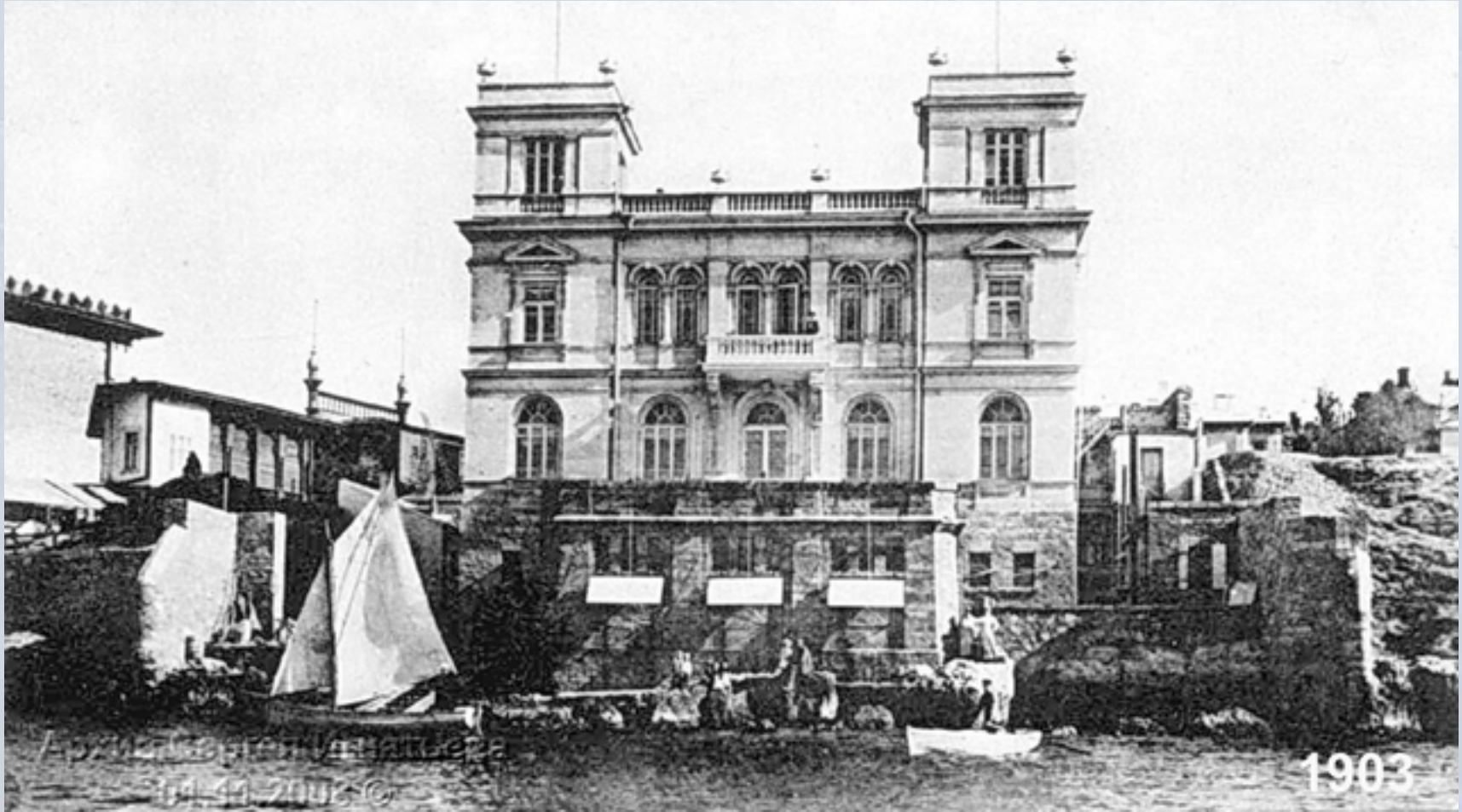
A.O. Kovalevsky Institute of Biology of the Southern Seas National Academy of Sciences of Ukraine

The A. O. Kovalevsky Institute of Biology of the Southern Seas (IBSS), National Academy of Sciences of Ukraine is one of oldest and reputable marine research centre in the world. In 1871 Biological Station, the first in Russia and the third in Europe, was founded in Sevastopol on the initiative of Nikolai N. Miklukho-Maklai, the prominent Russian explorer, and A.O. Kovalevsky, the famous scholar and the first director of the Station. Cherishing the 138-year-old classical academic traditions, the Institute of Biology of the Southern Seas increases and improves the scientific potential and welcomes international scientific co-operation. IBSS includes 13 scientific departments, RV "Professor Vodyanitskyi", scientific library, the editorial and publishing department, the Aquarium-Museum.



....HYPOX partner institutions: IBSS

Sevastopol Biological Station (1903)



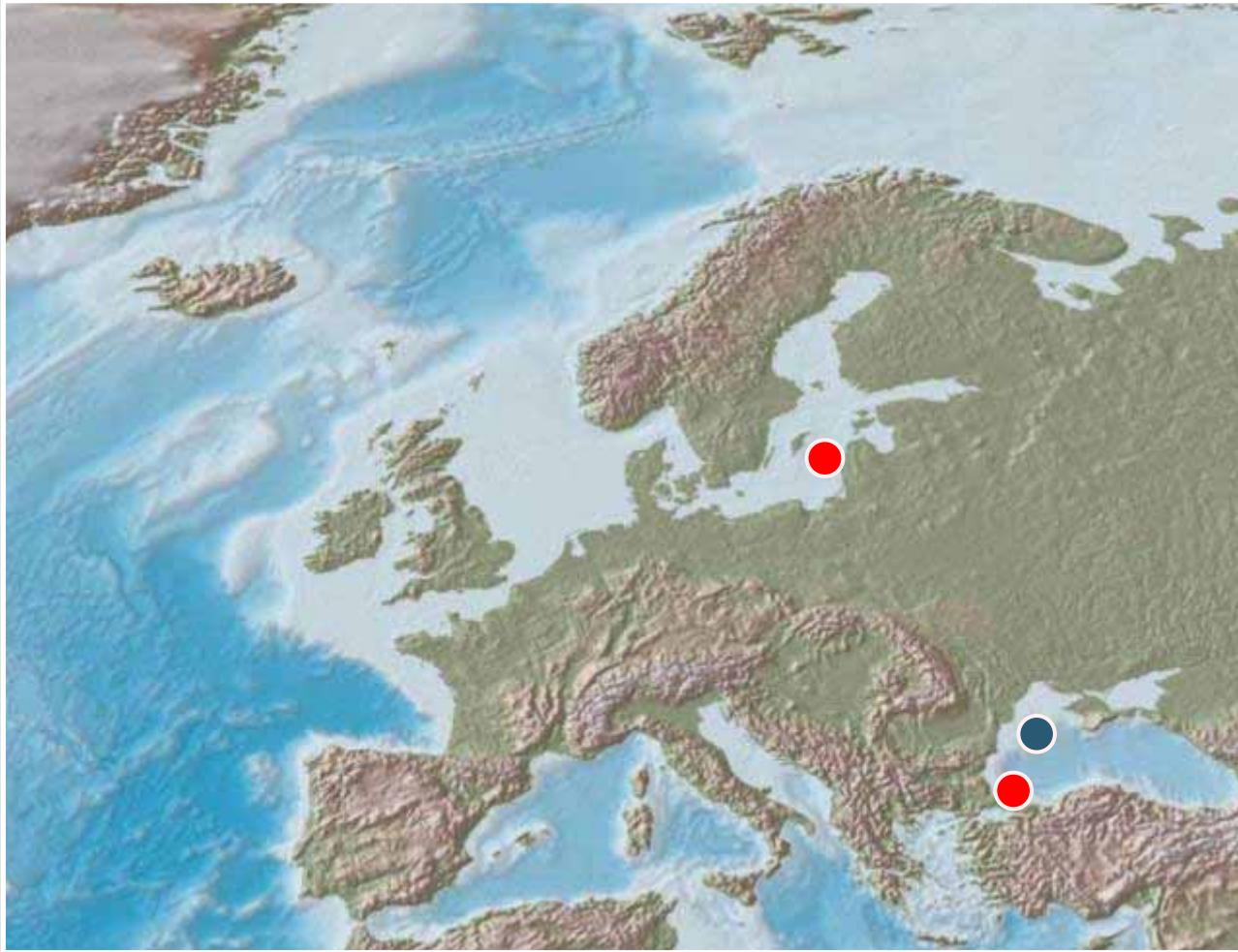
....HYPOX partner institutions: IBSS

- Approaches & concepts
 - > complex study of the structure and functioning of marine ecosystems in conditions of global climate change & anthropogenic impacts;
 - > integral coastal zone management;
 - > reservation of Black & Azov Seas biodiversity
 - > development of principally new methods and technical means for effective environmental control of biota & marine environment quality
- Methods & tools:
 - > from specimen to ecosystem
 - > basic physical and biogeochemical parameters in water and sediments
 - > control of quality marine environmental and assess risks for biota
 - > *in situ* and lab experiments
- Department of Benthos Ecology role in HYPOX
 - Habitat group, taxonomic group, experimental group, biogeochemistry group
 - > WP4 leader
 - > field studies (Crimea & Bosphorus, Gotland Basin)
 - > cruise lead (Black Sea)



....HYPOX partner institutions: IBSS

Main study sites



Black Sea:
Crimea region
(coastal zone and
oxic/anoxic
interface)

Bosporus

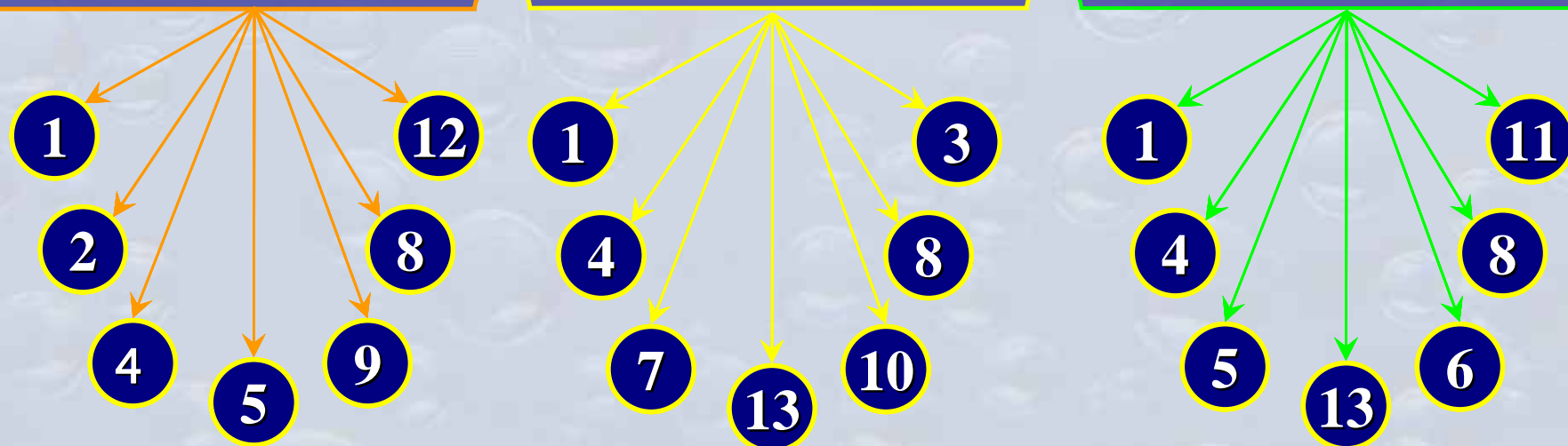
Baltic Sea:
Gotland Basin

Main trends of research at IBSS

Evolution of marine and ocean ecosystems under climatic changes and impact

Conservation of Biodiversity of the Black Sea basin

Coastal natural resources sustainable development



Departments:

1 – Physiology of Animals and Biochemistry; 2 – Functioning of Marine Ecosystems; 3 – Plankton; 4 – Benthos Ecology; 5 – Radiation and Chemical Biology; 6 – Marine Sanitary Biology; 7 – Ecological Parasitology; 8 – Ichthyology; 9 – Ecological Physiology of Algae; 10 – Mariculture and Applied Oceanology; 11 – Biophysical Ecology; 12 – Marine Pharmacology and Biological Testing; 13 – Biotechnology and Phytoresources.

....HYPOX partner institutions: IBSS

IBSS structure

**Institute of Biology of the Southern
Seas NASU**

IBSS Odessa branch

IBSS Karadag branch

**Experimental Station
“Batiliman”**

....HYPOX partner institutions: IBSS

Research Vessel „Professor Vodyanitsky”



perfectly equipped
for oceanological
research

space for up to 30
researchers

12 scientific
laboratories

....HYPOX partner institutions: IBSS

IBSS international cooperation

International governmental and non-governmental organizations:

UNESCO

Intergovernmental Oceanographic Commission (IOC / UNESCO)

UNEP / UNDP / GEF

NATO

IAEA (International Atomic Energy Agency)

CIESM (International Commission for the Scientific Exploration of the Mediterranean Sea)

EU (European Union)

IOI (International Ocean Institute)

SCAR (Scientific Committee on Antarctic Research)

Cooperation with other Organizations, Agencies and Institutes:

Marine scientific institutes and centers from Russia, Bulgaria, Turkey, Romania, Georgia, United Kingdom, France, Germany, Italy, China, USA, Guinea, Greece, Israel, Poland, Malta etc.

