

....HYPOX partner institutions

Partner 11:

SAMS (Oban, Great Britain)



....HYPOX partner institutions: SAMS

Scottish Association for Marine Science

www.sams.ac.uk



hypox₂



SCOTTISH
ASSOCIATION
for MARINE
SCIENCE

....HYPOX partner institutions: SAMS

SAMS in brief



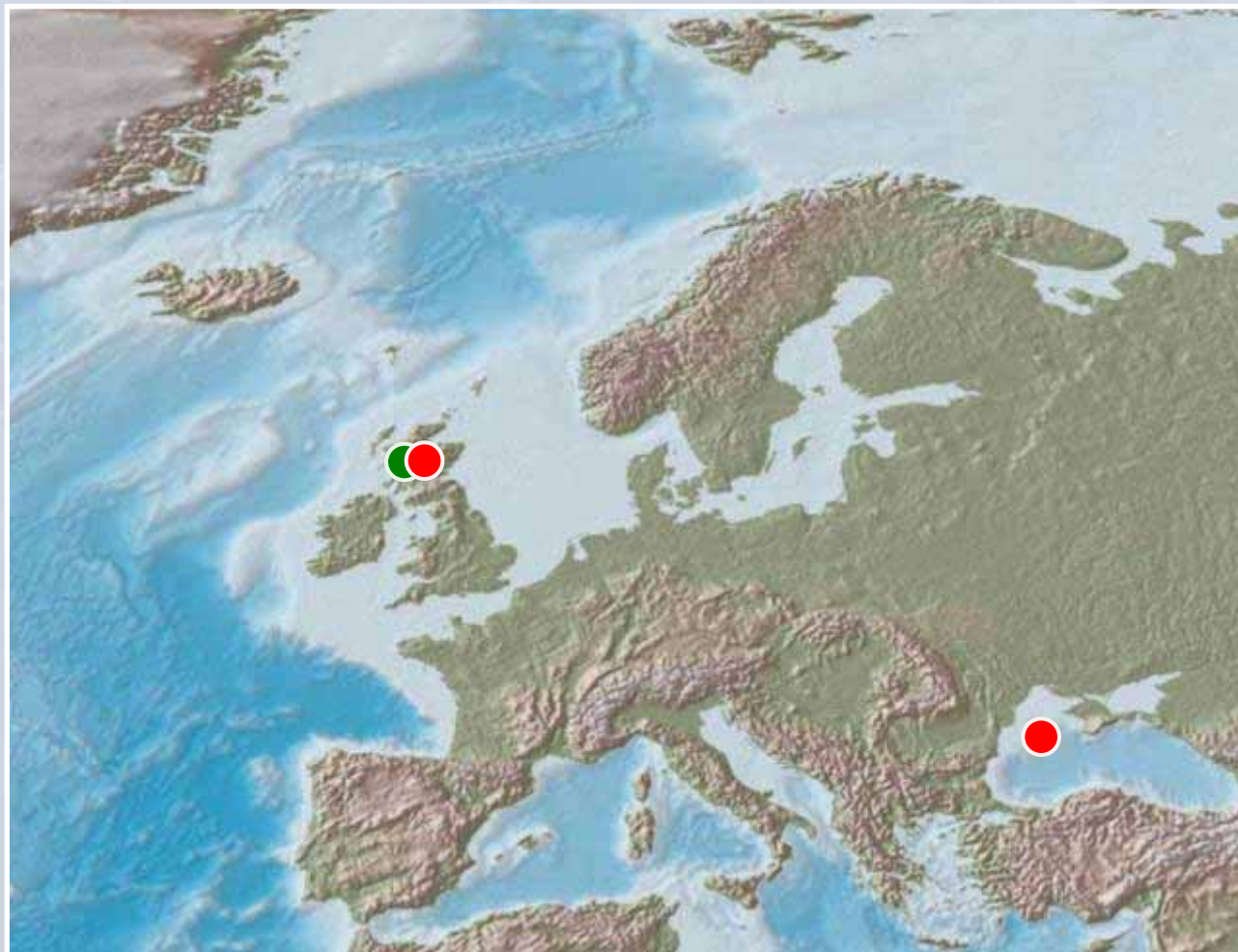
- Approaches and concepts
Combining field observations with computer modeling of sal-temp-oxygen distribution in Loch Etive; prediction of timing and frequency of renewal events and duration of hypoxia based on IPCC scenarios; effects on benthic biogeochemistry
- Methods & tools
In situ observatory, remote sensing, benthic landers, macro & microsensors, hydrodynamical model (POLCOMS) & box model
- HYPOX-related departments and role in HYPOX
Biogeochemistry, Physics & Technology
 - > WP7-lead
 - > establishment of permanent observatory in Loch Etive
 - > field studies (Loch Etive & Black Sea)
 - > modeling of sal-temp-oxygen distribution in Loch Etive



SCOTTISH
ASSOCIATION
for MARINE
SCIENCE

....HYPOX partner institutions: SAMS

Institute & main study sites location



SAMS

Loch Etive

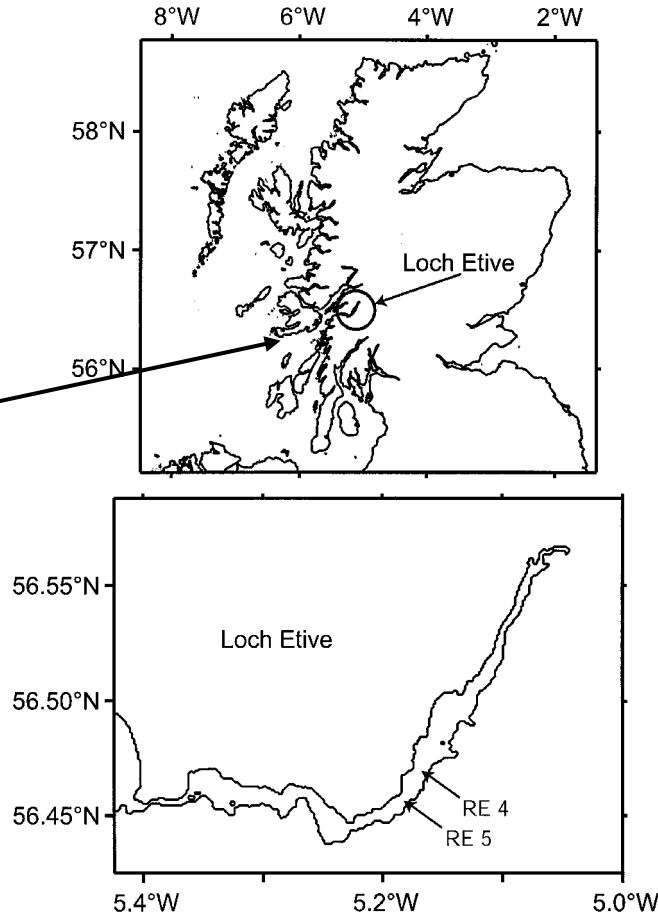
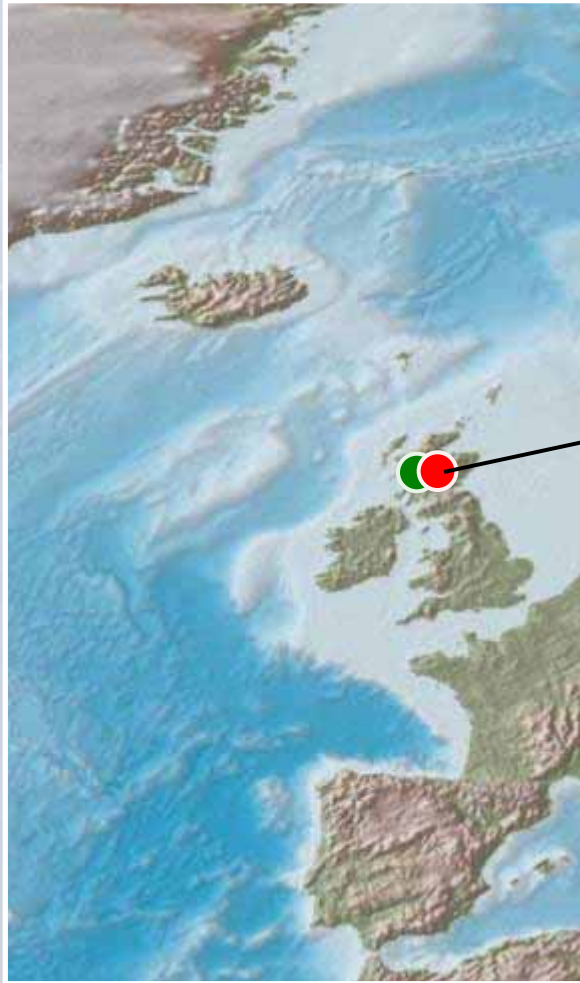
Black Sea



SCOTTISH
ASSOCIATION
for MARINE
SCIENCE

....HYPOX partner institutions: SAMS

Institute & main study sites location



SAMS

Loch Etive

Black Sea



SCOTTISH
ASSOCIATION
for MARINE
SCIENCE

....HYPOX partner institutions: SAMS

SAMS infrastructure

- 2 research vessels
- Mechanical & electronics workshops
- New aquarium facilities
- Modern analytical & wet labs
- Benthic lander centre
- Microsensor laboratory
- Diving facility
- Conference & meeting rooms
- Various sampling gear
- Library
- Etc....



....HYPOX partner institutions: SAMS

SAMS tasks in HYPOX:

- WP 1 - scientific requirements, technical specification & strategy and recommendations for Eive observatory (T1.1-1.3)
- WP 2 - modelling of O₂ dynamics in Loch Eive (T2.4)
- WP 3 - input to existing and future impacts of hypoxia on ecosystems (T3.1-3.3; T3.5-3.7)
- WP 5 - data management & standardization (T5.1-5.4)
- **WP 7 - implementation and operation of Eive observatory (T7.1-7.3)**
- WP 8 - dissemination and outreach of findings (T8.4-8.5)



SCOTTISH
ASSOCIATION
for MARINE
SCIENCE