

....HYPOX partner institutions

Partner 12:

UGOT (Goeteborg, Sweden)



....HYPOX partner institutions: UGOT

University of Gothenburg www.gu.se

Dept. of Chemistry www.chem.gu.se and

Dept. of Earth Sciences www.gvc.gu.se



....HYPOX partner institutions: UGOT

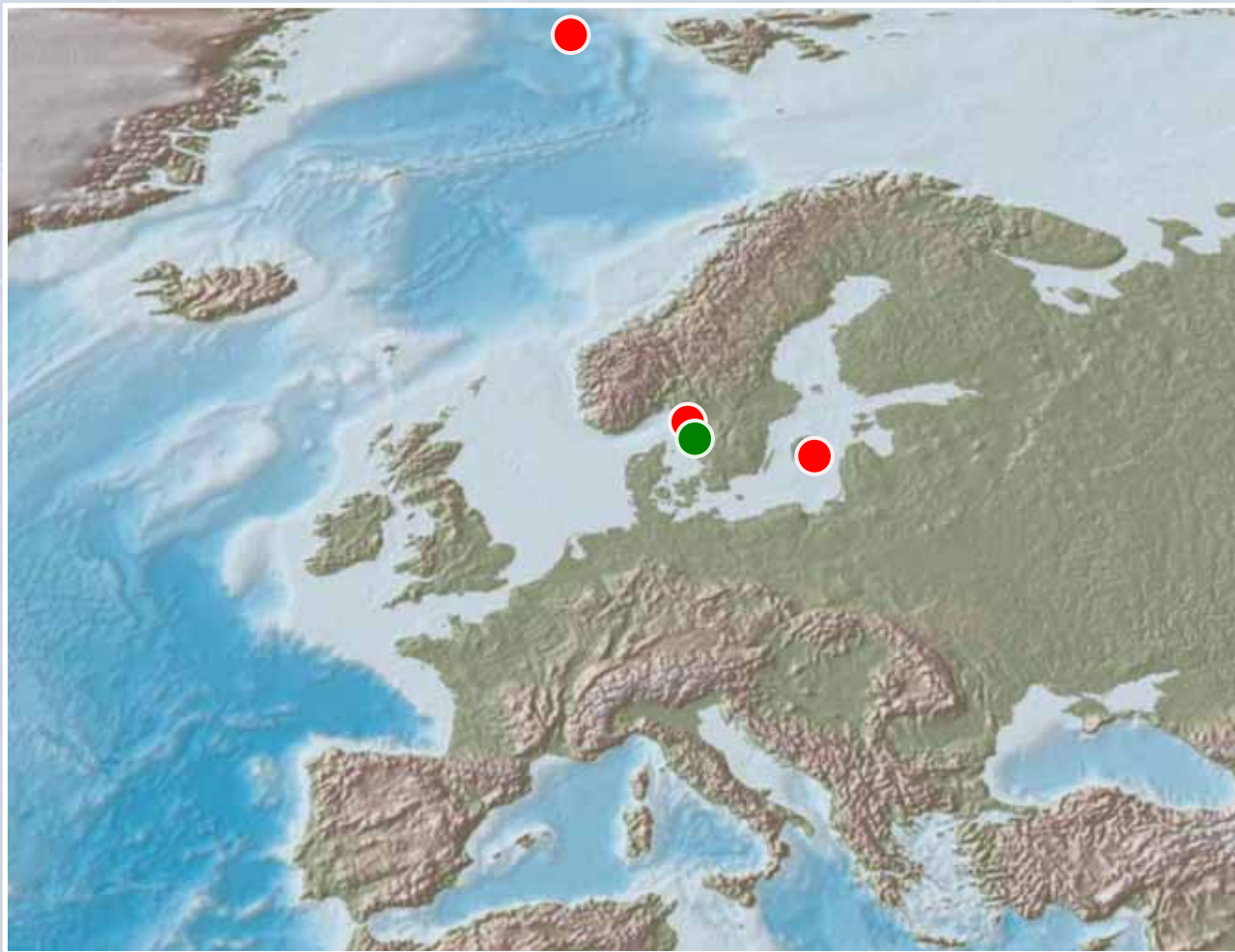
The University of Gothenburg in brief

- Approaches & concepts
Combining field research / measurements on processes and distributions in sediment and water with modeling
- Methods & tools:
From in-situ studies using benthic landers, planar optodes and LT moorings (T, S, and O₂ in surface water; O₂ and currents in bottom water) to coupled modeling; From biogeochemistry to physical oceanography
- HYPOX-related groups and role in HYPOX
Benthic biogeochemistry group, Marine Systems Analysis group
 - > Field studies (Koljö Fjord, Gotland Basin, Hausgarten / Fram Strait)
 - > 1-D process-based physical-biogeochemical modeling
 - > Field site study lead (Koljö Fjord)
 - > Cruise lead (Koljö Fjord, Gotland Basin)



....HYPOX partner institutions: UGOT

Institute & main study sites location



University of
Gothenburg

Koljö Fjord

Gotland Basin

AWI-Hausgarten